

PrintMonkey

PrintMonkey is a utility that, after being configuring properly, it automatically reconfigures the default printer in Windows to the nearest printer. If you work from home and an Intel office, or work at two or more Intel offices, this can save you the headache of always picking the right printer when you print a document or the risk of printing something confidential at a printer that is at another location. I've had it happen to me. I'm sitting at home working over VPN and need to print a document. I hit File -> Print and (out of habit) hit "OK" and the print job, unfortunately, ends up at the office because that is the current default printer in Windows. I really wanted the print job to come out on my printer at home. Wouldn't it be nice if the default printer automatically changed depending on where I am? With PrintMonkey it does.


PrintMonkey works by looking at the computer's current IP addresses and reconfigures the default printer to the one that corresponds as defined by you. When first installed, and each time you're at a new location, you'll need to add a new printer rule but after that you can leave it alone and forget about it. PrintMonkey will change the default printer for you in the background when you revisit that location.

Installation


Do the following to install PrintMonkey:

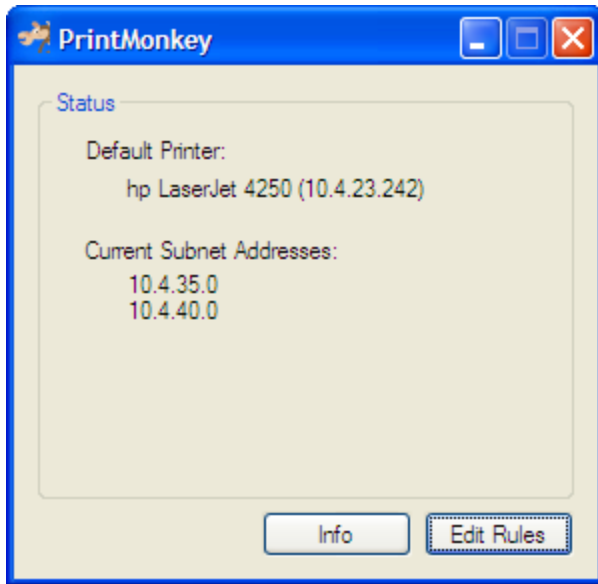
- Download the PrintMonkey install zip file and unzip the files to a folder on your hard drive.
- Run setup.exe. If the Microsoft .Net 3.5 runtime isn't already installed on your system, the installer will install it for you.
- Run PrintMonkey by clicking Start -> All Program -> PrintMonkey. Note that it is placed in the Startup folder so the next time you login it will start automatically.

At this point PrintMonkey will launch and will then automatically minimize to the system tray.

The icons for it look like this:  Double click on it to see the application window.

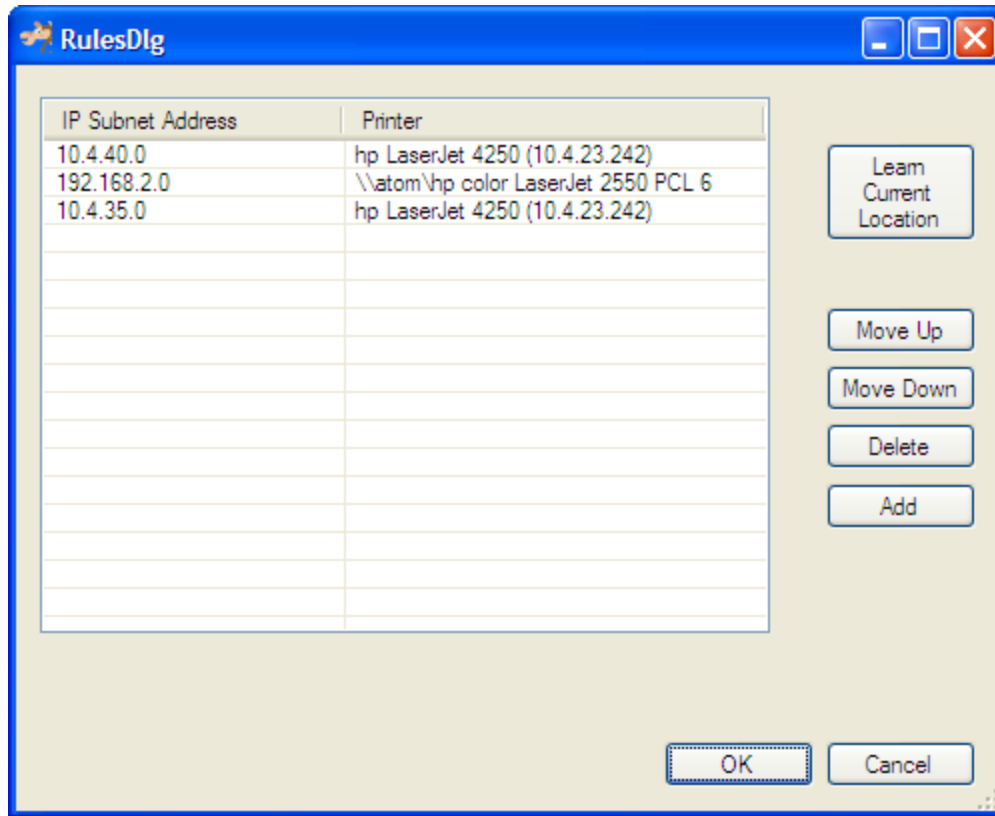
Configuration

- First, install any printers you want to use so they show up in the Control Panel's "Printers & Faxes" area.
- If needed, manually set the default printer to the printer you want for the location you're currently configuring. I.e. Start -> Control Panel -> Printers & Faxes ...etc...
- If not already connected, connect to the network that will be identified with this printer. This can be Ethernet and/or wireless.
- Double-click the PrintMonkey icon  in the system tray to bring up the application window which looks like this:



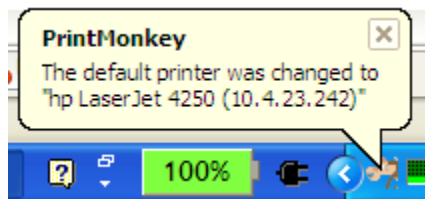
- Click "Edit Rules"
- Click "Learn Current Location". Click "OK". DON'T CLOSE THE APPLICATION WINDOW, but instead hit the minimize button to send it back to the system tray. If you close the application, it won't do its job.

Note that at this point one or more rules have been added. Rules are read top-to-bottom looking for the current subnet that matches the ones in the rules list. As soon as a match is found, the default printer is configured to be the one listed for the rule. The rules search stops as soon as the first one is found. Below is an example of the rules dialog box. Note you can customize the rules or add your own rules if the "Learn Current Location" doesn't get it quite right.



Notification

- As the system runs, the application will change the default printer (as indicated by the rules) and will notify the user of the change with a balloon notification like this one:



Q&A

Q: Where did the name PrintMonkey come from?

A: The idea came from the concept that there is a little (virtual) monkey working in the background helping by doing simple tasks such as manage the default printer.