

GroundWork Monitor Community Edition is free software; you can redistribute it and/or modify it under the terms of the GNU General Public License as published by the Free Software Foundation; either version 2, or (at your option) any later version. GroundWork Monitor Community Edition is distributed in the hope that it will be useful, but WITHOUT ANY WARRANTY; without even the implied warranty of Merchantability or fitness for a particular purpose. See the GNU General Public License for more details

GroundWork Monitor Community Edition 5.3 Install Guide – VMware Virtual Appliance

The purpose of this document is to detail the components and installation sequence required for the GroundWork Open Source virtual appliance. This appliance is based on GroundWork Monitor Community Edition v5.3 and includes a small sample monitoring configuration.

Need assistance? Find answers in the GroundWork Community Support site at:

<http://www.groundworkopensource.com/community/forums/>

For Downloads and Documentation, see:

<http://www.groundworkopensource.com/community/downloads/>

CONTENTS

[SECTION 1 – APPLIANCE BUILD AND PREREQUISITES](#)

[SECTION 2 – DOWNLOAD AND INSTALL](#)

[SECTION 3 – WHAT'S NEW IN 5.3 VM](#)

[SECTION 4 – GETTING STARTED](#)

SECTION 1 – APPLIANCE BUILD AND PREREQUISITES

1. Tested hypervisors

- VMware Server
- VMware ESX v3.x
- VMware Fusion 2

Note: VMware tools for Linux build 6532 installed.

Note: Time synchronization with host OS is enabled and is required for correct operation.

2. Operating System and Build Notes

- CentOS release 5.2
- Light CentOS installation. Gnome desktop and Firefox Web-browser available.
- Use of this appliance assumes working knowledge of VMware server. For additional information see:

<http://www.vmware.com/>

- GroundWork Monitor Community Edition 5.3 has been installed. The GWMCE installation includes MySQL, Apache, Java and other prerequisites in addition to the monitoring stack. These components are installed under `/usr/local/groundwork` as of this release.

3. Hardware Considerations

The Virtual Machine (VM) has been configured with minimal RAM (1GB) and disk (8GB.) These values should be increased, if possible, for better performance. It is recommended that you have at least 1.5GB of RAM available to the appliance in most cases. Note also that scheduling frequent active service checks of hosts across slow WAN/VPN connections will degrade performance. Consider passive service checks in those situations.

Sizing recommendations for GroundWork Monitor Community Edition virtual appliance monitoring networks up to 150 devices:

- 1.5 GB RAM
- 1 CPU, 2.8 GHz P4 or better
- 80 GB disk

Networks over 150 devices:

- 4 GB RAM or more
- 2 CPU, 3.2 GHz P4 or better
- 160 GB disk

4. GroundWork Community User Counts

Groundwork Monitor 5.3 includes the Network Service that provides notifications and messages to administrators. It also shares installation information with GroundWork Monitor. More details about the function of the Network Service are included in the Release Notes, on the desktop of the “groundwork” user within the VM. Also, please consider visiting the GroundWork Google Map and posting some details along with other Community Members

<http://maps.google.com/maps/ms?ie=UTF8&hl=en&msa=0&msid=112033879701670338917.00044b658c2588feb8574>

SECTION 2 – DOWNLOAD AND INSTALL

Downloading the GroundWork Monitor v5.3 Virtual Appliance

1. Go to SourceForge at the following URL:
<http://sourceforge.net/projects/gwmos>
2. Select Download GroundWork Monitor Community Edition Virtual Appliance.
3. Unzip/unpack the file to your host system.
4. Power on the appliance.
5. If you are prompted to create a new unique identifier, choose “create.”
6. On first boot, a new network card that is unique to your installation of VMware will be detected by the appliance guest OS. Accept the defaults for installation and proceed.
7. Decide whether you need NAT or Bridged networking.

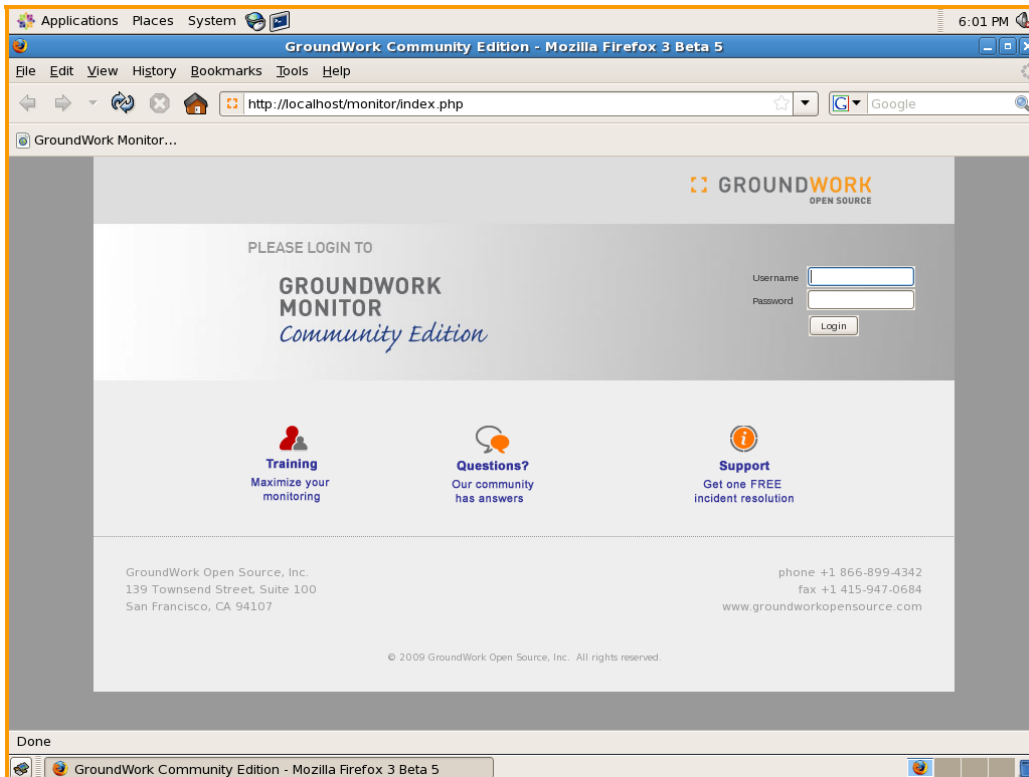
The appliance defaults to bridged networking and the guest OS is configured to use DHCP to acquire an IP address. If you accept this configuration, on first boot you will need to login to the console and determine the IP address assigned to your system. Using NAT prevents autodiscovery and some other features from functioning correctly.

Upon boot, the appliance will auto-login as user “groundwork”. The password for this account is “groundwork”.

The root account is also accessible. The default password for this account is “opensource”.

Note: Changing the passwords from their default values is highly recommended.

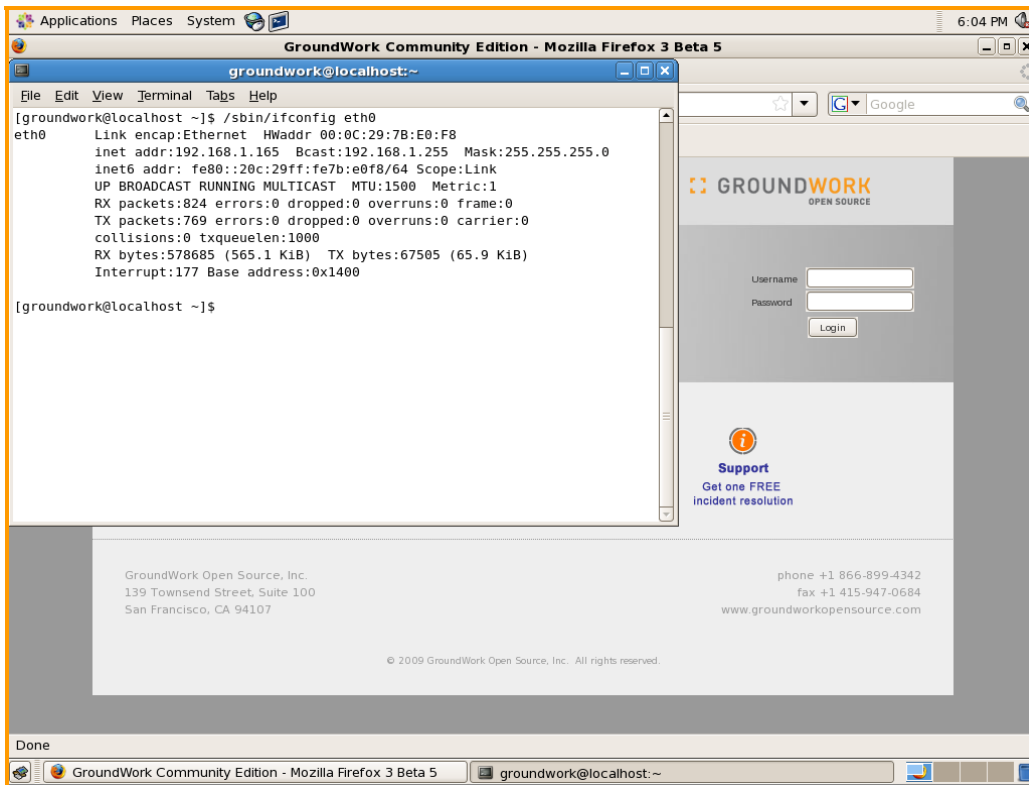
Once the VM has started you should be presented with the GroundWork Monitor Community Edition login screen within the Firefox browser as shown in the following figure.



This in-VM browser can be used to access the GroundWork Monitor application or it can be accessed from a Web browser running on a different machine.

To access GroundWork Monitor from another machine (for example, your laptop) determine the IP address allocated to the virtual machine and enter it in your browser address bar as shown in the following figure.

To determine the IP address of your VM, start the terminal application (in the top navigation bar) and enter the command shown in the following figure. In this example the IP address of the VM is 192.168.1.165, it may be different in your installation.



The following default users are provided for accessing the GroundWork Monitor interface:

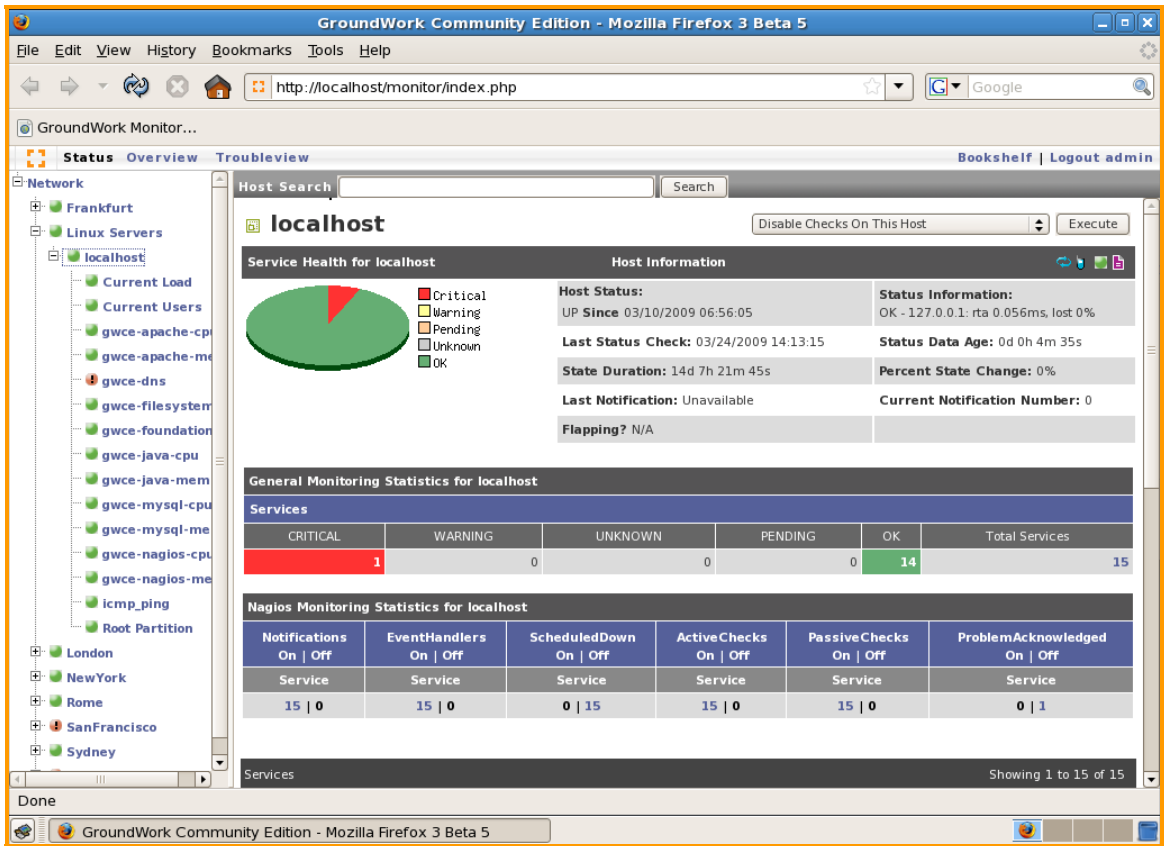
- admin - Password is “admin”
- joe - Password is “joe”

Note: Changing these default passwords is highly recommended.

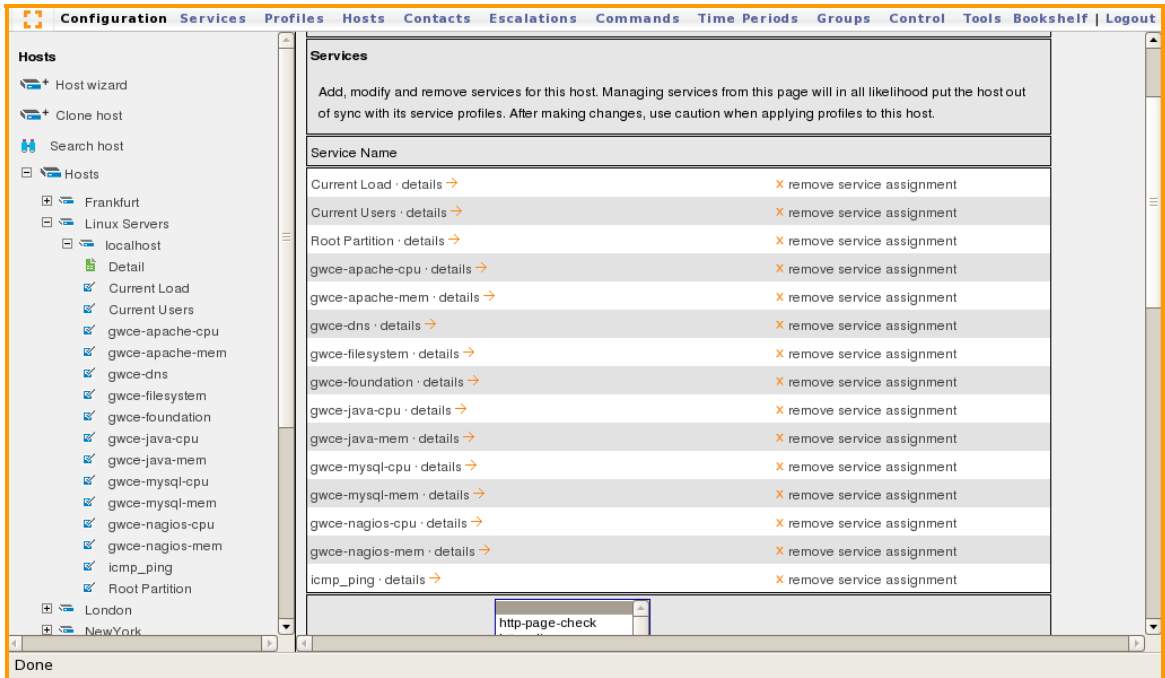
SECTION 3 – WHAT’S NEW IN 5.3 VM

This appliance contains some pre-configured monitoring of live Internet hosts. Note that WebInject and NagVis are not pre-installed in this release but may be added. Please refer to <http://www.nagvis.org/> and <http://www.webinject.org/> for more information. As with previous releases of the GroundWork Monitor VM Web site, availability is monitored. SLA reports may be generated using the built-in availability reporting tool.

Monitoring the Monitor – Additional example monitors have been included to help measure the performance of various components of the monitoring system. Components such as Java, Apache, Nagios, and MySQL are monitored for CPU and memory.



The corresponding configuration is illustrated in the following figure.



More details of the new features included in the 5.3 release can be found at the following URL:

<http://www.groundworkopensource.com/products/whats-new-5.3.html>

SECTION 4 – GETTING STARTED

If you are new to GroundWork Monitor, the following are some suggestions from the GroundWork Support Team:

- **DNS** – The VM operates properly without DNS enabled, however manually entering IP addresses may become cumbersome. Correct configuration of DNS is recommended, if possible.
- **Merging Existing Nagios Instance** – If you are running Nagios v3.x, 2.x or v1.x, you can load the existing configuration files into Groundwork. On the user interface, select Configuration -> Control -> Load. See the Bookshelf for more information.

Note: Nagios file paths will need to be modified in those files, or a symlink is needed from /usr/local/nagios to usr/local/groundwork

- **Discovery** – The default templates use Nmap and SNMP for discovery, but you still want to define what metrics you need versus what you want. Plan through which service checks you want to assign to the devices you expect to discover (Windows, Linux, router, or switch). Consider the reporting needs versus the operational or response needs too when deciding the coverage to configure.
- **Command Line** – Avoid doing things as root. It will avoid permission issues with custom plugins and extensions that you might add. This way you avoid creating files and locations that can't be accessed by user nagios.
- **Free Support Incident** – If you are currently using GroundWork Monitor Community Edition and you have a problem that hasn't been answered on the forums, our support team would like to assist. Please complete the "Contact Us" form at the following URL:

<http://www.groundworkopensource.com/about/contact.html>

In the comments box, describe the problem that you are experiencing and denote you are also using the Community Edition. We will respond to you promptly.

- **Upgrading your existing Virtual Appliance** - Login to your appliance console as root to launch a Firefox window that you can use to access the following URL:

<http://www.groundworkopensource.com/downloads/>

From this location you can download the latest version of GroundWork Monitor Community Edition. Installation documentation is available with the download. The 5.3 Community Edition software will detect and upgrade an existing GroundWork Monitor 5.2 installation. Please consult the release notes before upgrading an existing system.